



# Boyton Place 2025 Travel Newsletter



**Persimmon**  
Together, we make your home



**SmarterTravel**  
from Richard Jackson Limited

## How's it going?

On behalf of Persimmon Homes, Smarter Travel Ltd would like to thank the residents of Boyton Place for their continued engagement during the Travel Plan period, including participation in the annual Travel Survey to understand how travel behaviour changes over time, and how we might be able to help you travel more sustainably. Congratulations to our 3 prize winners this year!

We're pleased to share that the Boyton Place Travel Plan target for Year 5 (2025) has been achieved, thanks to your sustainable travel choices!

Visit **boytonplace.co.uk** to find travel information for your local area, view the latest Travel Plan update and claim your welcome voucher (see back page for details).

We hope you find this newsletter useful. If you have any travel related queries, please do get in touch.

### Your Travel Plan Coordinator



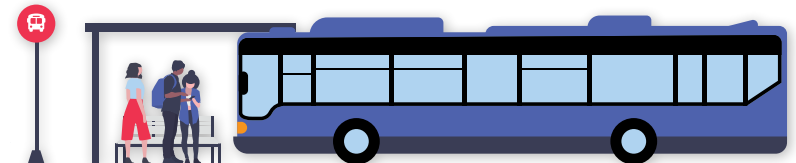
## Public Transport

Your nearest bus stops are Ann Suckling Road on Haverhill Road, for the 13/13A Stagecoach service between Haverhill and Cambridge via Addenbrooke's Hospital. Visit the Stagecoach website to view timetables and travel updates: **stagecoachbus.com/timetables** or scan the QR code.



Your nearest train station is Whittlesford Parkway, a 26-min drive, connecting to Cambridge for onward journeys. There are 348 parking spaces with a daily charge of £10.20 or £42.57 per week. Key connections are available from Cambridge, to London, Norwich, Ipswich, Brighton and Birmingham. Visit **greateranglia.co.uk** for more information and download their app for live travel updates.

The Voluntary Network operates in your local area, providing door-to-door community transport for those who are unable to access public transport, assisting with travel to/from appointments and social activities. To book, call 01638 664304 between 8am - 4pm, Monday to Friday or visit their website: **thevoluntarynetwork.org/community-transport**



## Active Travel

### Where's your sense of adventure?

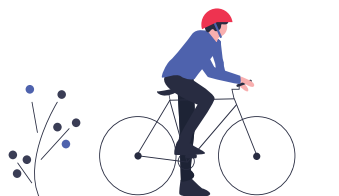
Find it with **Strava.com** by following family, friends, even athletes' adventures, log over 30 activities on the app, such as walking and cycling, and have fun with new challenges.

If you are walking, wheeling or cycling, plan ahead with the **BBC Weather** app to check if you'll need to grab a coat.

Your local cycle shop is **Halfords**, a 9-minute cycle from home. They offer a range of bikes and accessories and at the moment they're also offering free bike health checks.

Explore with the **Newmarket & District Ramblers** group and find local walking routes and group walking events in and around Haverhill.

Spot any issues in the roads, footpaths or cycleways? Report it to **highwaysreporting.suffolk.gov.uk**

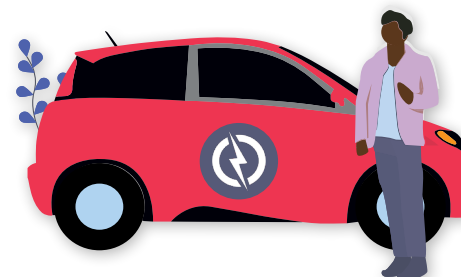


## Car Share/Go Electric

Sharing a journey with 1 other person could cut your costs and carbon by 50%, not to mention it saves the average person £1,000 per year! Scan the QR code or visit **Liftshare.com** to start car sharing with Liftshare, it's free and flexible, only share when it suits you.



Go electric! As of September 2025, there were over 86,000 charging points in the UK and growing fast. Find chargers and plan routes at **Zap-map.com**.



Thinking about charging your vehicle at home? Find out how you could do so by visiting the Octopus EV website: **octopusev.com/charging/home-charging**

# Plan Your Journey

## Has your household claimed a welcome voucher yet?

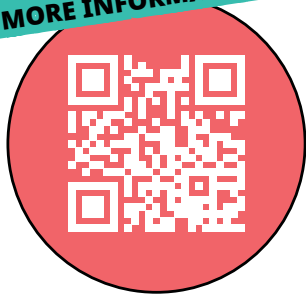
The first occupier of each household within Boyton Place is eligible to claim a £100 active travel voucher or 4-weeks' worth of bus travel with Stagecoach. Only 14% of occupied households have claimed so far, so you could be missing out!

Limited to one claim per household, first occupiers only. Proof of address is required to claim a voucher. Visit our website for full Terms and Conditions: [smartertravel.uk.com/contact-us/terms-conditions-2](https://smartertravel.uk.com/contact-us/terms-conditions-2)

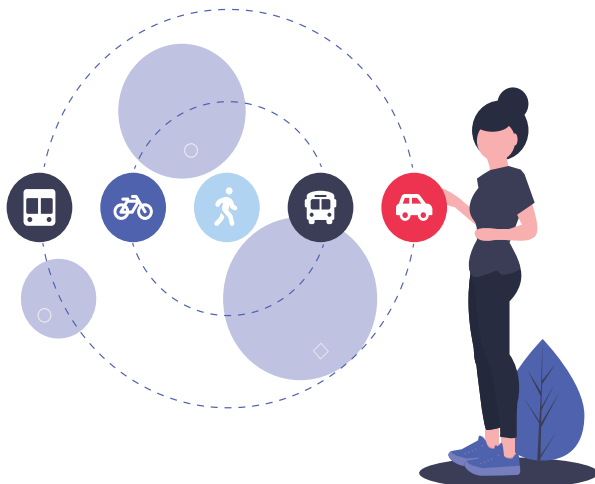
## Personal Travel Plan (PTP)

Each member of your household can also claim a free PTP, created by your Travel Plan Coordinator, to help explore your sustainable travel options. The PTP offers information on viable travel modes for your journey including walking, cycling, public transport and car sharing, where appropriate.

**SCAN HERE TO FIND OUT  
MORE INFORMATION!**



Scan the QR code or visit  
**[boytonplace.co.uk](https://boytonplace.co.uk)**



## Contact Your Travel Plan Coordinator



**01206 228800**



**[BoytonPlace@smartertravel.uk.com](mailto:BoytonPlace@smartertravel.uk.com)**



**[boytonplace.co.uk](https://boytonplace.co.uk)**



**[Facebook.com/SmarterTravelSuffolk](https://Facebook.com/SmarterTravelSuffolk)**



**SmarterTravel**  
from Richard Jackson Limited